



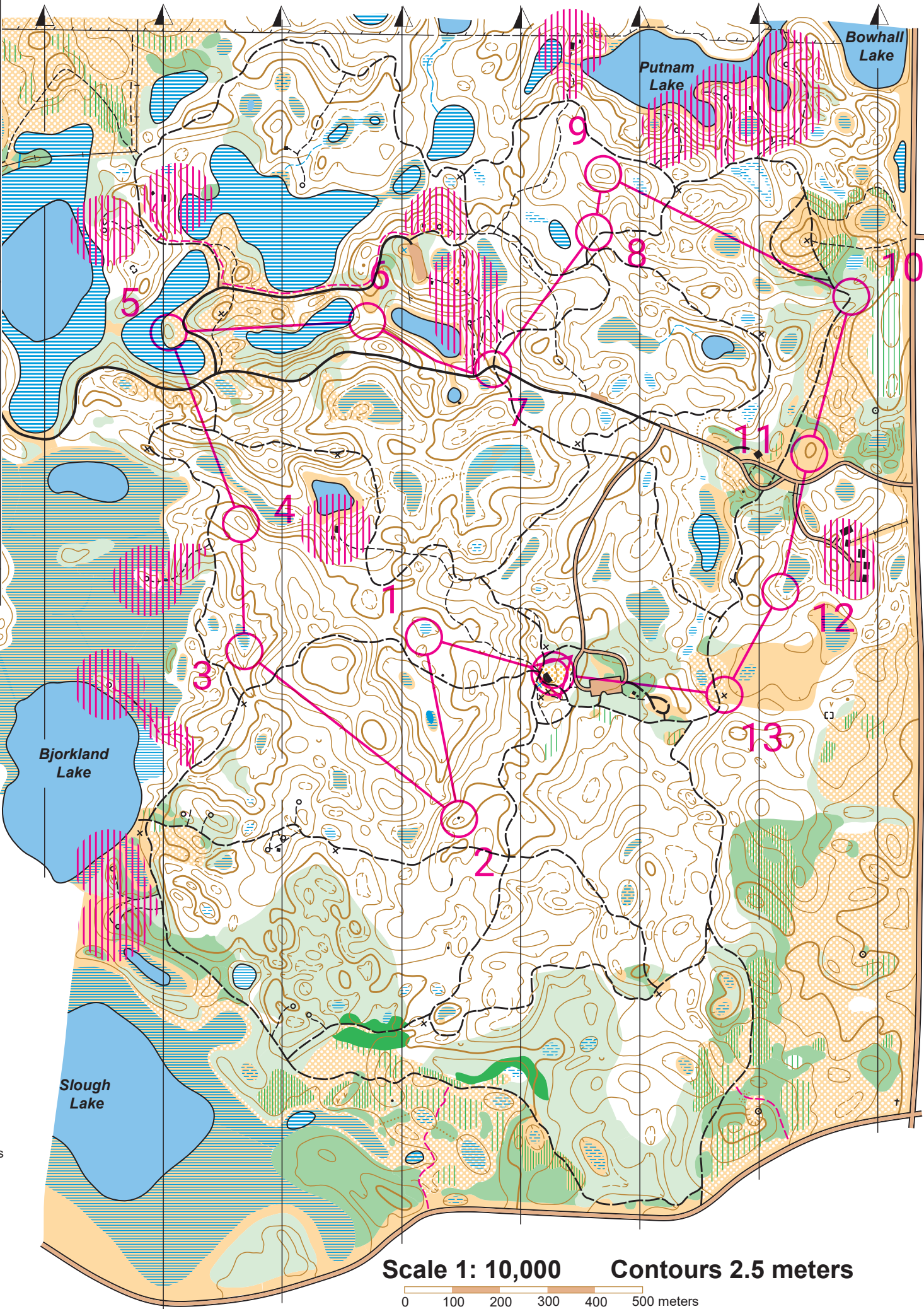
Orange

Lake Maria State Park

STAY OUT OF OUT OF BOUND AREAS

lake maria 2019					
Orange	5.0 km				
▷					
1	217	≡			♀
2	226	•			
3	209	≡			○•
4	214	○			••
5	221	○			••
6	225	≡	⊙		≡
7	220	⧵	⧵	×	
8	205	○			○•
9	206	○			••
10	208	⧵			<
11	211	○			○•
12	203	≡			○•
13	218	×			
⊗	360 m ⊗				

- Legend**
- paved road, parking area
 - dirt road
 - vehicle track
 - wide footpath, horse trail
 - small footpath, winter trail
 - indistinct footpath
 - power line
 - fence
 - ruined fence
 - building, small building, ruin
 - man-made features, camp site
 - passable rock face
 - boulder
 - grave
 - lake, pond
 - marsh, uncrossable marsh
 - seasonal marsh
 - intermittent stream
 - small watercourse, footbridge
 - drinking water
 - open land with scattered trees
 - rough open land/prairie
 - rough open land with scattered trees
 - open land
 - forest: slow running
 - undergrowth: slow running
 - forest: difficult to run
 - undergrowth: difficult to run
 - vegetation: difficult to walk
 - vegetation boundary
 - earth bank, pit
 - small erosion gully, erosion gully
 - broken ground
 - knoll, small knoll
 - depression, small depression
 - contour
 - index contour
 - form line, slope tag
 - out-of-bounds
 - winter snow shoe route



Scale 1: 10,000 Contours 2.5 meters

0 100 200 300 400 500 meters

Base map: Minnesota Orienteering Club, 1991
Field survey: Plamen Djambazov, May 2000
Cartography: Plamen Djambazov
Ian Harding 2019

©2019 Minnesota Orienteering Club
For more information on the sport of orienteering,
please see the MNOC web site <http://www.mnoc.org>

Please stay out of the remote campsites and cabins areas and their access trails marked by